



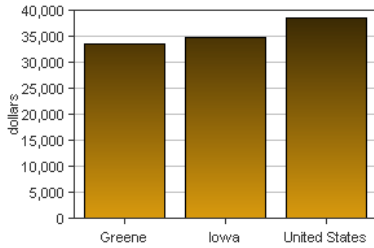
# Greene, Iowa

Greene is one of 99 counties in Iowa. It is not part of a Metropolitan Area. Its 2007 population of 9,479 ranked 80th in the state.

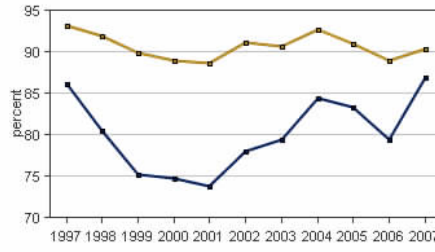
## PER CAPITA PERSONAL INCOME

In 2007 Greene had a per capita personal income (PCPI) of \$33,586. This PCPI ranked 39th in the state and was 96 percent of the state average, \$34,916, and 87 percent of the national average, \$38,615. The 2007 PCPI reflected an increase of 15.0 percent from 2006. The 2006-2007 state change was 6.6 percent and the national change was 4.9 percent. In 1997 the PCPI of Greene was \$21,806 and ranked 61st in the state. The 1997-2007 average annual growth rate of PCPI was 4.4 percent. The average annual growth rate for the state was 4.0 percent and for the nation was 4.3 percent.

Per Capita Personal Income, 2007



Per Capita Income as a Percent of the United States, 2007



Iowa Greene

## TOTAL PERSONAL INCOME

	2006-07 percent change	1997-2007 AAGR
Greene	13.9 %	3.4 %
Iowa	7.2 %	4.3 %
U.S.	6.0 %	5.4 %

AAGR: average annual growth rate

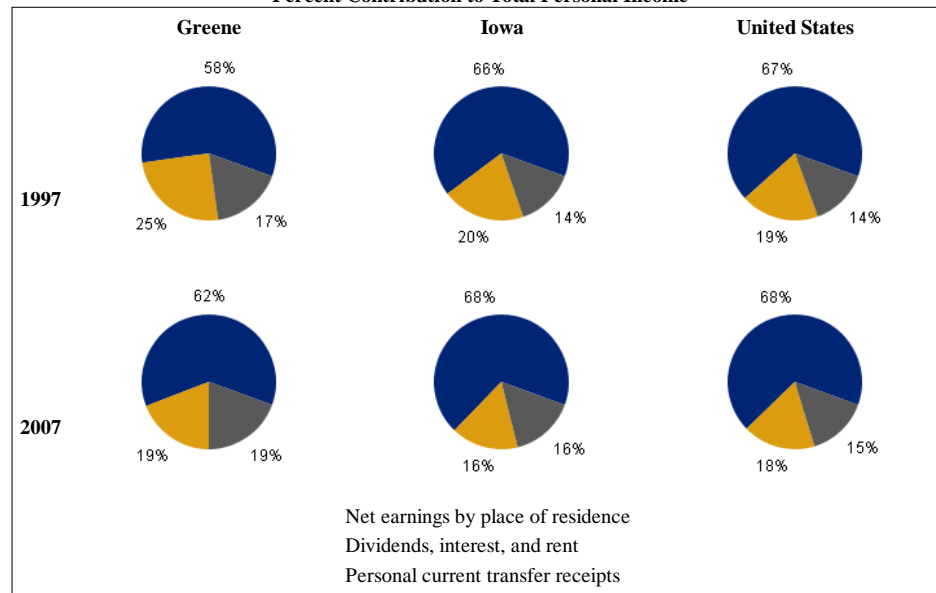
In 2007 Greene had a total personal income (TPI) of \$318,363\*. This TPI ranked 78th in the state and accounted for 0.3 percent of the state total. In 1997 the TPI of Greene was \$226,828\* and ranked 80th in the state.

\*Note: Total personal income estimates are in thousands of dollars, not adjusted for inflation.

## COMPONENTS OF TOTAL PERSONAL INCOME

Total personal income includes net earnings by place of residence; dividends, interest, and rent; and personal current transfer receipts received by the residents of Greene.

Percent Contribution to Total Personal Income



2006-2007 percent change			
	Greene	Iowa	U.S.
Net earnings	18.9 %	7.3 %	5.0 %
Dividends, interest, and rent	10.3 %	9.5 %	9.2 %
Personal current transfer receipts	3.3 %	4.8 %	6.9 %

1997-2007 average annual growth rate			
	Greene	Iowa	U.S.
Net earnings	4.1 %	4.7 %	5.4 %
Dividends, interest, and rent	0.8 %	2.0 %	4.5 %
Personal current transfer receipts	4.5 %	5.5 %	6.1 %