



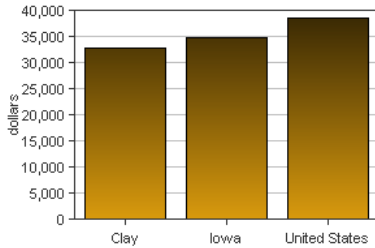
# Clay, Iowa

Clay is one of 99 counties in Iowa. It is part of the Spencer, IA Micropolitan SA. Its 2007 population of 16,686 ranked 43rd in the state.

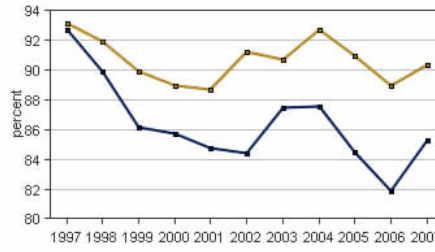
## PER CAPITA PERSONAL INCOME

In 2007 Clay had a per capita personal income (PCPI) of \$32,929. This PCPI ranked 46th in the state and was 94 percent of the state average, \$34,916, and 85 percent of the national average, \$38,615. The 2007 PCPI reflected an increase of 9.3 percent from 2006. The 2006-2007 state change was 6.6 percent and the national change was 4.9 percent. In 1997 the PCPI of Clay was \$23,490 and ranked 25th in the state. The 1997-2007 average annual growth rate of PCPI was 3.4 percent. The average annual growth rate for the state was 4.0 percent and for the nation was 4.3 percent.

Per Capita Personal Income, 2007



Per Capita Income as a Percent of the United States, 2007



Iowa Clay

## TOTAL PERSONAL INCOME

	2006-07 percent change	1997-2007 AAGR
Clay	9.0 %	2.8 %
Iowa	7.2 %	4.3 %
U.S.	6.0 %	5.4 %

AAGR: average annual growth rate

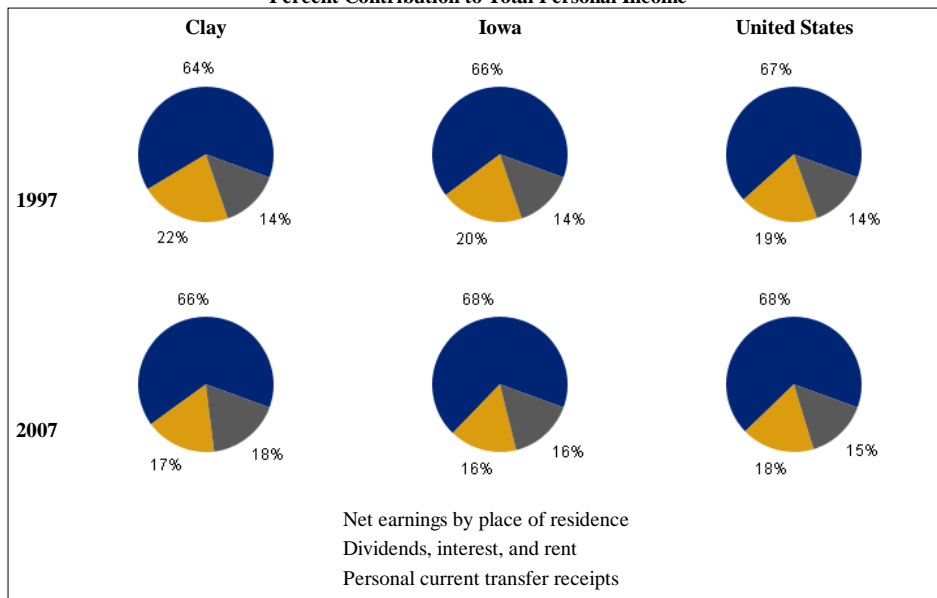
In 2007 Clay had a total personal income (TPI) of \$549,446\*. This TPI ranked 46th in the state and accounted for 0.5 percent of the state total. In 1997 the TPI of Clay was \$414,879\* and ranked 39th in the state.

\*Note: Total personal income estimates are in thousands of dollars, not adjusted for inflation.

## COMPONENTS OF TOTAL PERSONAL INCOME

Total personal income includes net earnings by place of residence; dividends, interest, and rent; and personal current transfer receipts received by the residents of Clay.

Percent Contribution to Total Personal Income



	2006-2007 percent change		
	Clay	Iowa	U.S.
Net earnings	11.2 %	7.3 %	5.0 %
Dividends, interest, and rent	8.1 %	9.5 %	9.2 %
Personal current transfer receipts	2.1 %	4.8 %	6.9 %

	1997-2007 average annual growth rate		
	Clay	Iowa	U.S.
Net earnings	3.1 %	4.7 %	5.4 %
Dividends, interest, and rent	0.3 %	2.0 %	4.5 %
Personal current transfer receipts	5.1 %	5.5 %	6.1 %